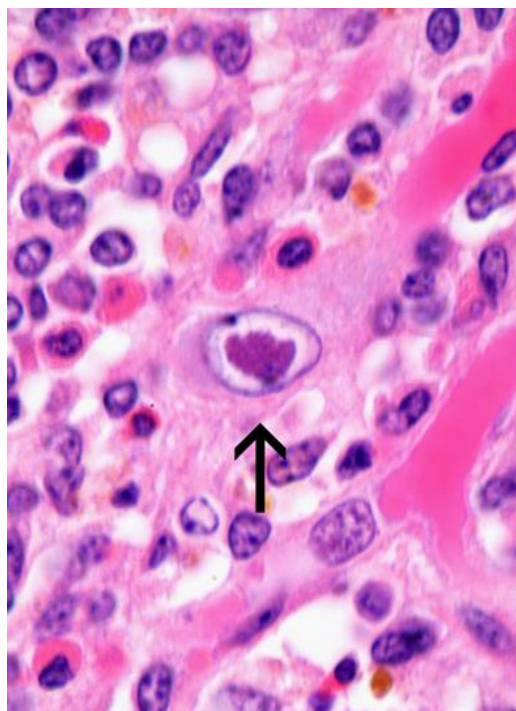


New Bovine Adenovirus PCR test now available

Gribbles Veterinary is very excited to add a bovine adenovirus type-10 qPCR to our ever expanding suite of PCR tests developed specifically for New Zealand veterinarians. This brand new test to the market has been developed by and is exclusive to Gribbles Veterinary. The ability to confirm diagnosis of this disease will enable farmers and veterinarians to isolate and manage stock with confidence. This will in turn help prevent outbreaks spreading throughout the herd, and keep production losses to a minimum.

Bovine adenoviruses are associated with a number of disease conditions in cattle including enteric disease, respiratory infections, and weak calf syndrome. In addition, adenoviruses are widespread in cattle farming environments and may be carried by asymptomatic cattle.

There are currently ten known bovine adenovirus serotypes. Recently, bovine adenovirus type 10 (BAdV-10) in particular has been associated with outbreaks of acute enteric disease in cattle in New Zealand and overseas. In New Zealand, cases tend to occur in R1 cattle in the autumn and winter. Clinical histories characteristically report small explosive outbreaks of enteric disease leading rapidly to recumbency and death. Some cases have a history of a stressful event such as transport or high parasite burden, while others seem to occur in well-grown stock on good pasture. Risk factors and potential interactions with other pathogens are yet to be fully investigated. Tentative diagnosis is through observation of histological lesions and viral inclusion bodies in the gastrointestinal tract and kidney and through exclusion of other causes. The presence of BAdV-10 may now be confirmed through qPCR.



The BAdV-10 PCR was developed as part of an investigation into the apparent increase in the number of bovine adenovirus cases diagnosed histologically over the last few years. Potential applications of the qPCR include confirmation of BAdV-10 in tissues where adenovirus inclusion bodies are visible; detection of BAdV-10 where histopathology is equivocal or autolysed; and testing of EDTA blood samples from clinically affected animals.

Please just note bovine adenovirus or BAdV PCR on your submission form to request this testing, or discuss with your local pathologist when submitting samples for histology where you think bovine adenovirus could be a diagnostic consideration.

Cost of testing: \$71.10 ex GST

Turn-around time: 5-7 working days

Samples required: Fresh tissue, fixed tissue, EDTA blood

If you have any questions or would like any further information, please contact your local Gribbles Veterinary laboratory or your business development manager.

Reference: Vaatstra BL, Tisdall DJ, Blackwood M, Fairley RA. Clinicopathological features of 11 suspected outbreaks of bovine adenovirus infection and development of a real-time quantitative PCR to detect bovine adenovirus type-10. *New Zealand Veterinary Journal* 64:308-13, 2016